

Actia Replacement Screen Installation



Once you have the instrument cluster removed from the vehicle, remove the lens cover from the cluster by pressing in and down on the clear tabs on the back of the cluster.



You will find the clear tabs all around the perimeter of the case.



Once all of the tabs have been released, flip the cluster over and lift the lens out of the cluster case.



Remove the button pins and place them to the side.



Remove the needles by rotating them completely around a few times to break them loose from the motor pins. Once they have been rotated, grab ahold of them as shown above and rotate them as you are pulling up on them firmly until they come off the motor pins. Set all of the needles aside for now.



Remove the gauge surround plate from the face, by grabbing the surround as shown above in the photo and lifting straight up.



On the back of the case find the four white tabs. Locate the two that are closest to the plug and press toward the center of the case and down firmly until each of those two tabs release.



Press firmly down on the plug until the cluster board drops out of the case.



On the side of the board that has three white plastic tabs, gently lift on the board next to the plastic tab as you push out on the tab. Do this to each one of the tabs until that side of the board comes loose and lifts up.



On the four remaining tabs on the other side of the board, you will want to do the same process as step 9. Press out on each of the four remaining white plastic tabs one at a time as you are gently lifting up on the board until the board comes loose.



Remove the board and place it face up on a clean flat surface.



Using your finger nails, pull on the small tabs that are part of the dark grey retainer for the ribbon socket. Pull away from the white ribbon socket until the retainer comes to a stop.



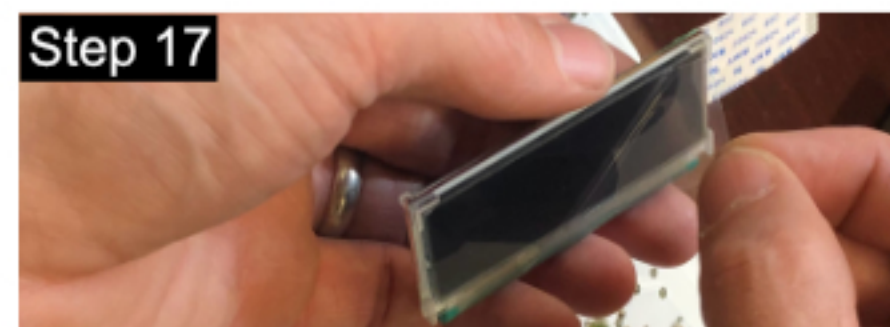
Turn the board over and press in and down on the tabs that hold the screen bezel to the board.



Once the bezel tabs are released, lift the bezel up and off the board.



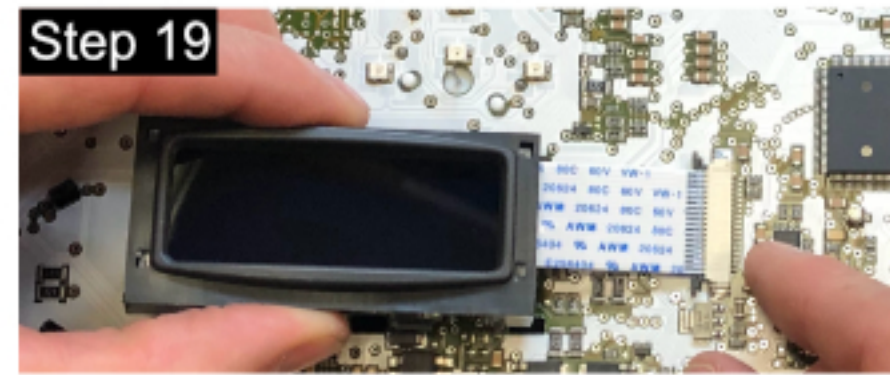
At the end of the bezel that has the ribbon coming out, holding the bezel as shown, press out on the bezel while pushing up on the screen to remove the screen from the bezel.



Remove the protective cover from the new screen before installing it into the bezel. Throughout the rest of the installation process, do not touch the face of the screen. Do not use any form of cleaners on the screen. If you do have to wipe the screen, use an eye glass wipe gently to do so.



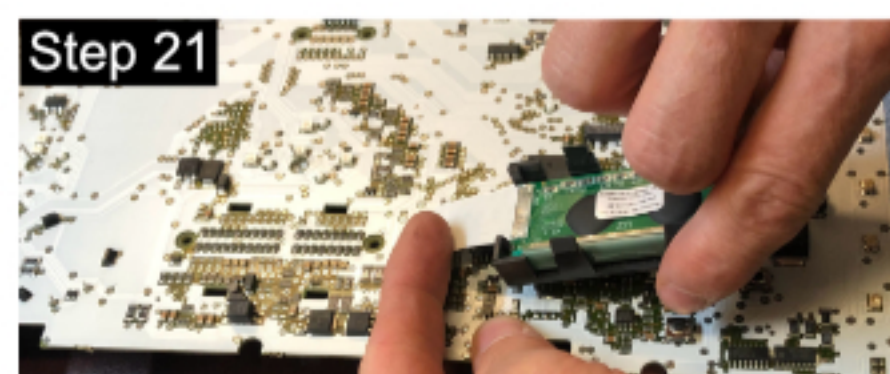
Snap the new screen into the bezel by aligning the white ribbon with the corresponding opening in the bezel. Place the side of the screen that does not have a ribbon around the edge into the bezel and with two fingers press the screen firmly into place. You will feel it snap into place.



Align the ribbon with the socket on the board, and slide the ribbon into the socket firmly until it comes to a firm stop. Make sure the ribbon is square with the connector.



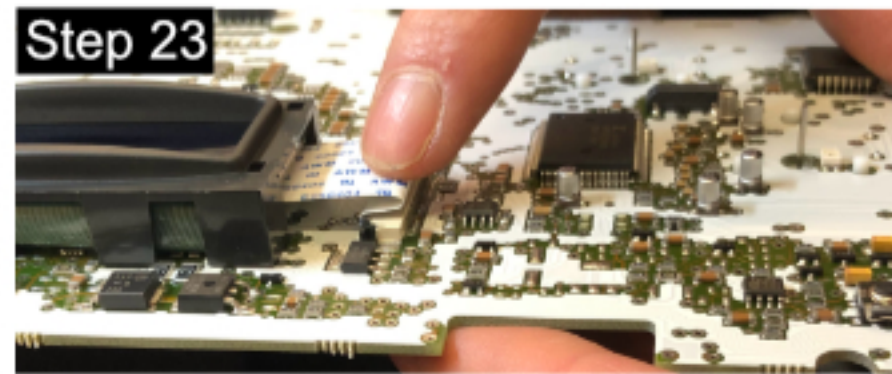
Lock the ribbon into the connector by using two fingers and pressing evenly toward the socket until the lock seats fully in place.



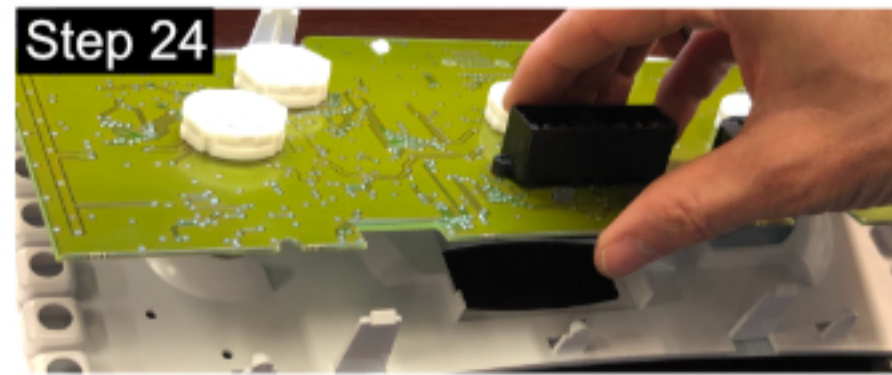
Fold the ribbon over the connector, and press it down to create it.



Lay the screen back over and install the bezel onto the board



Once the bezel is snapped back into place, press down on the ribbon as shown above, to create the ribbon so it lays flat.



At this point the screen installation is complete, now you will be reassembling the board back into the cluster case. Start by snapping the board onto its holder.



Install the board assembly into the case.



Be sure to press down firmly to snap the board assembly fully into the case. You will hear and feel it snap into place.



Once the board assembly is fully installed, you can reinstall the gauge surround plate. Make sure it also fully snaps into place.



Reinstall the button pins.



Using the steps listed below reinstall the needles as seen in the photo above. Start by GENTLY setting the needles on the motor pins so they are ready when you need to press them into place. All needles except the fuel gauge will be installed at the 50% point. The fuel gauge will be installed at the 100% point.

Calibrated needle installation

1. After the instrument cluster is plugged into the coach, set the parking brake.
2. Turn on the ignition without starting the engine.
3. Press and hold the "Mode" button for 20 seconds.
4. Once the "Mode" button is released that will place you into the menu. If you let the highlighted selection sit highlighted for more than 3 seconds it will select the highlighted option.
5. When in the menu, you can use the mode and trip buttons to scroll up and down in the menu. Scroll until you highlight the "Cluster Diagnostics" option.
6. Once that is selected just let it sit until it selects the "Gauge Test". Hold the needles at the installation point and press them down when the display reaches the desired installation point percentage for each needle. Fuel 100% All others at 50%



When all the needles are installed, make sure you unplug the cluster and then plug it back in and do the gauge test once more to verify they are correct. When done clean the lens and blow out any dust and reinstall the lens. All done!