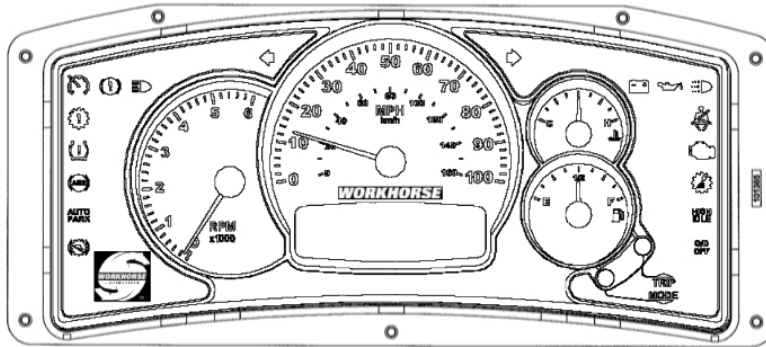
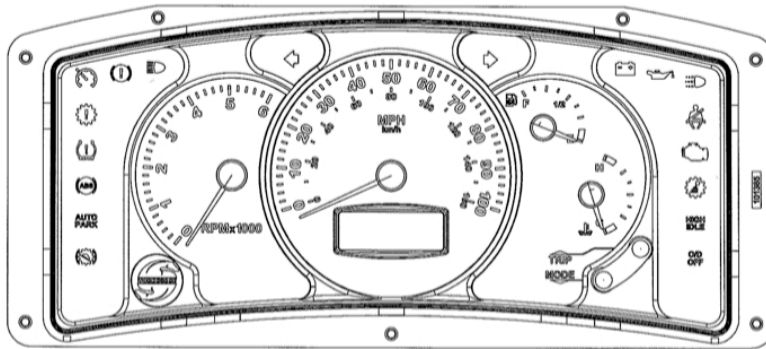
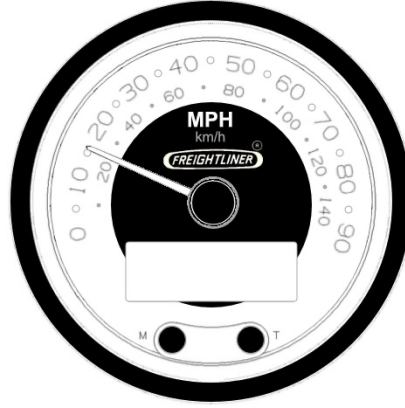


Actia Button Cover Replacement Kit

This kit replaces the rubber button covers for Actia instrument cluster styles seen below.



Installation Instructions

1. Remove the instrument cluster from the dash mount.
2. Remove the factory lens
3. Remove the factory rubber button cover
4. Clean the lens where the button cover installs
5. Find the combination of parts needed for your cluster arrangement from the list below
 - a. Parts list for rectangular cluster with factory lens
 - i. Short metal pins
 - ii. Button cover without spacer
 - iii. Short screw
 - iv. 2 Pin caps
 - b. Parts list for rectangular cluster with new upgraded lens
 - i. Medium metal pins
 - ii. Button cover with spacer
 - iii. Long screw
 - iv. 2 Pin caps
 - c. Parts list for round cluster with factory lens
 - i. Long metal pins
 - ii. Button cover without spacer
 - iii. Short screw
 - iv. 2 Pin caps
 - d. Parts list for round cluster with new upgraded lens
 - i. Long metal pins
 - ii. Button cover with spacer
 - iii. Long screw
 - iv. 2 Pin caps
6. Once you have your parts list selected, take the button cover and place it in the recess on the front of the lens.
7. Hold the button cover in place, flip the cover so you can see the back of the lens
8. Using a fine point marker, place a dot over the button cover screw hole on the back of the lens
9. Remove the button cover from the lens and use a 1/16" drill bit to drill a hole through the lens where you made the mark for the button screw hole
10. Now place the button cover in the recess of the lens, using the spacer between the lens and the button cover if required for your application
11. Holding the button cover in place with your finger, install the screw through the lens and thread it into the button cover using a #1 phillips screwdriver until the head touches the lens DO NOT OVER TIGHTEN
12. Place the pins selected for your application into the cluster button pin holes
13. Press the button pin caps onto the button pins making sure they are fully seated
14. Now reinstall the lens onto the cluster and test button operation.
15. When installing the lens onto the round style cluster make sure the lens is clocked correctly, so it does not put the buttons in a bind.